



#1 EXPAND PROGRAMMING & SERVICE

SAN ANTONIO PARK PARTNERS



- trybe • East Bay Asian Youth Center
- Head Start Early Education • Lotus Bloom
- San Antonio Family Resource Center
- EastSide Arts Alliance
- All-in Alameda Health Service
- Soccer without Borders
- Alameda County Building & Construction Trades
- Garfield Elementary • Roosevelt Middle School
- San Antonio Hills Neighborhood Association
- Trees for Oakland • Vertical skillz

GOAL: to make the Park a safe and welcoming place for with on-going events, activities, services and programs.

HEARTFELT THANKS to the community organizations and non-profits that offer wide range of programs San Antonio Park to serve the neighborhood. They include:

- Head Start Early Education • Sports for Youth • Food Distribution
- A Community Garden • Park Ambassadors • Malcolm X Jazz Arts Festival

WE NEED MORE — MUCH MORE

A multi-year agreement between Friends of San Antonio Park and the City of Oakland should be designed to attract and retain programming for all ages and abilities. Participating agencies would have formal agreements to operate from the Park, and be supported by related City Departments.

Here are some of the programs the community requested:

- Family Play Groups • Summer & After-School Environmental Education
- English as a Second Language • Art-Making • Sports Tournaments
- Youth Park Stewards • Music and Dance Performances • Multicultural Family Festivals

READY. SET. GO

San Antonio neighborhood organizations, schools, and residents are ready to partner **RIGHT NOW** with the City of Oakland to expand programming.

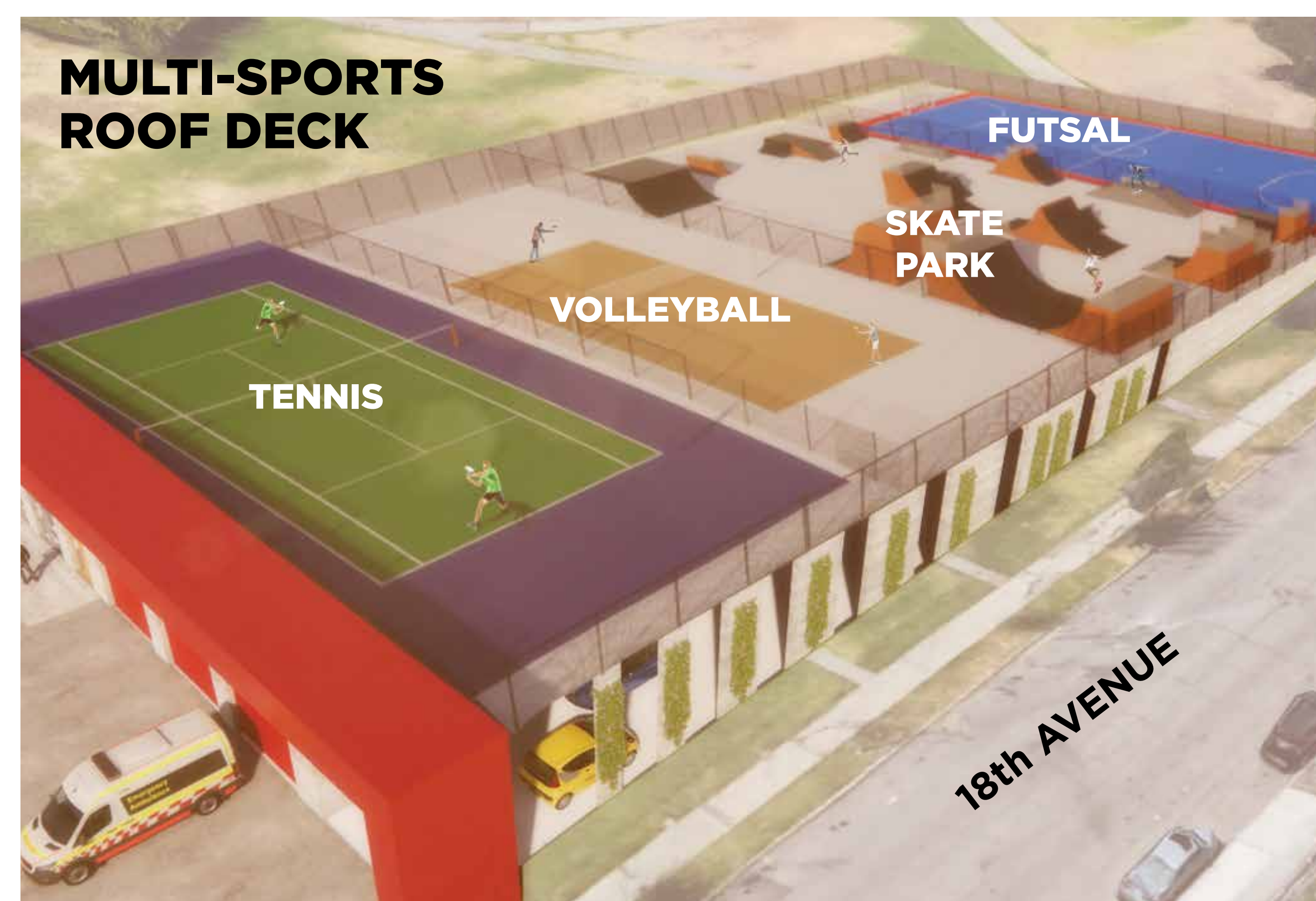


#2 ALL-PURPOSE COMMUNITY CENTER



**NEW RECREATION CENTER COMPLEX
WITH SPORTS DECK & LIBRARY**

**Our vision
for a
full-service
COMMUNITY
CENTER**



GOAL: a staging ground for Park activation, renewal & celebration

A new multi-purpose, multi-generational Community Resource Center, with a library and a roof-top sport deck, to be constructed on the footprint currently occupied by the unused tennis courts.

This building will serve as San Antonio Park's anchor to both launch and house robust year-round programming. It will provide much needed indoor and outdoor spaces for education, recreation, support services, community celebrations and food distribution.

The immediate areas surrounding the Community Resource Center will be landscaped with terraces, gardens, patios, and a stage to accommodate a wide range of active and passive outdoor recreational and cultural activities.

AMENITIES

- public library
- classroom/conference spaces
- gymnasium
- commercial kitchen / café
- sports deck

**A VIBRANT ACTIVITY HUB TO SERVE THE COMMUNITY NEEDS
TODAY, AND INTO THE FUTURE**

#3 CRITICAL INFRASTRUCTURE REPAIRS

**IT IS
TIME TO
INVEST IN OUR
NEIGHBORHOOD.**

GOAL: addressing decades of neglect and deferred maintenance due to budget cuts with parks in low-income neighborhoods disproportionately effected. It is time to reverse this inequitable trend.



Listed below are short-term, medium-term on-going repair and maintenance projects to ensure the safety of Park users of all ages and abilities and enhance their visit.

SHORT-TERM REPAIRS

- Remove picnic tables located in the Children's Play Area.
- Merge the Tot Lot and Children's Play Area to enlarge footprint and functionality
 - Upgrade all play structures.
 - Install fencing and gates for safe enclosure

MEDIUM-TERM REPAIRS

- Repair all pedestrian pathways to ADA standards
- Expand lighting throughout the Park
- Re-imagine and renovate the historic gazebo and viewing platform on East 19th Street.
- Install a practice field behind the current soccer field.

ON-GOING REPAIRS

- Install and maintain multilingual and braille signage to direct, educate, and inform Park users and visitors.
- Install and maintain kiosks to display information on current and upcoming activities and events.



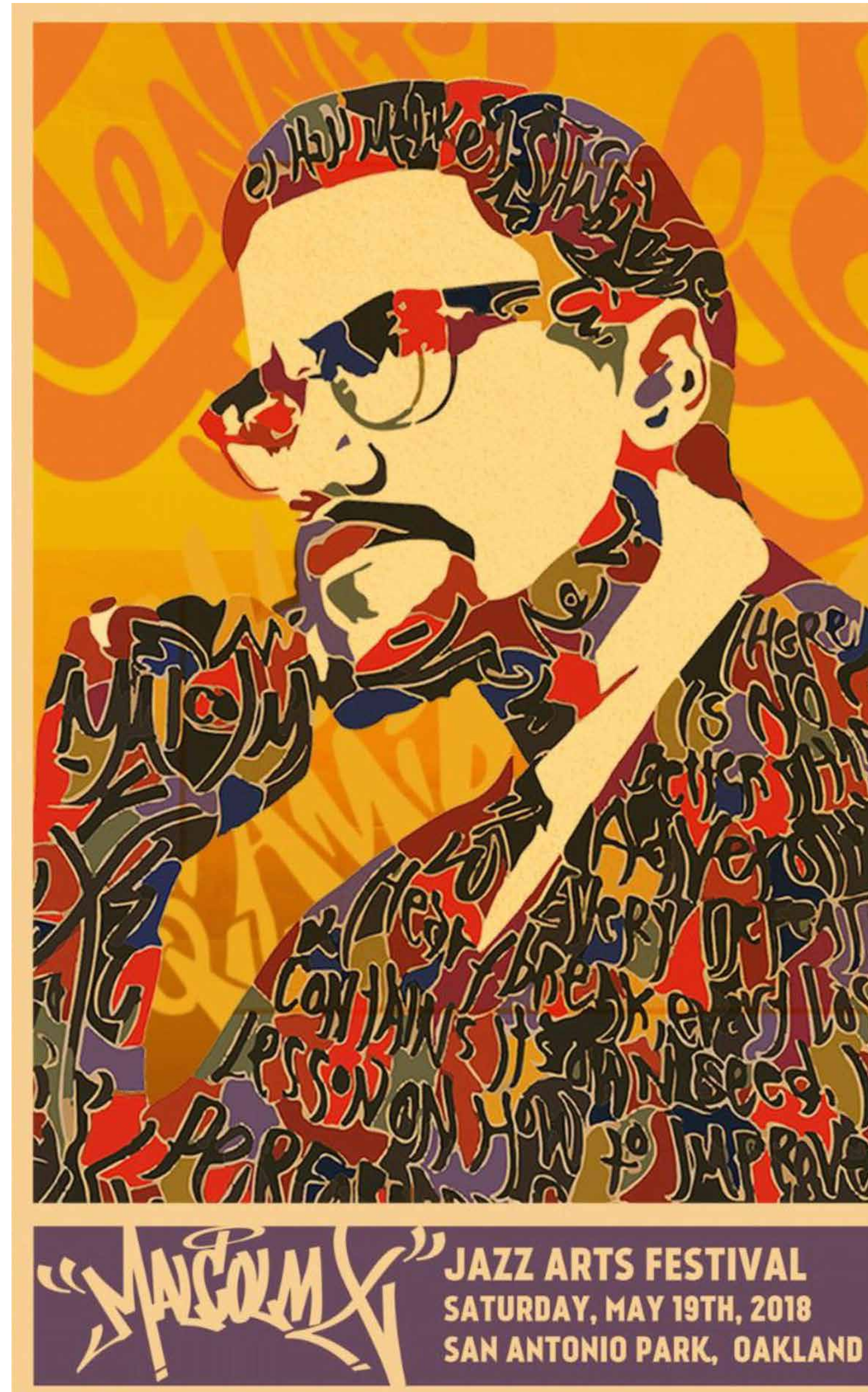


#4 ROBUST PARK STEWARDSHIP

GOAL: formal multi-year agreement between Friends of San Antonio Park and the City of Oakland to establish and implement Park stewardship standards, roles, and accountability to promote maximum participation.



2016 TREE PLANTING



San Antonio Park is a safe and more welcoming place for everyone when residents are directly involved in maintaining the Park as a safe, clean, and green space.

Friends of San Antonio Park is prepared to organize and engage an on-going stream of volunteer and in-kind support to help care for the Park.

VOLUNTEER ACTIVITIES

- Conduct regular Park clean-ups.
- Plant trees and install flower and native plant gardens.
- Install public art displays.
- Expand the Community Garden.
- Identify and report broken and hazardous conditions via 311.
- Monitor timely trash collection, irregular debris collection, and bathroom cleaning.



2018 WORKDAY EVENT WITH TRADE UNIONS